

switchbackup

software utility for complex network device configuration backup and management.

- * backup running configuration and port status
- * SQL server data repository
- * one click point in time restore
- * no limited devices, no limited configuration
- * configuration cloning, mass configuration, audits and analyzes

Switch Configuration Backup

System Tools & Utils Info

EruSoft Laboratory
connected to localhost

Create New Domain...
use to define new group

Edit Domain Options...
edit default options

Add Device to Domain...
use to add device to list

Delete Domain...
there must be no device

Domain: Test-Domain
Domain created: 02.06.2014 9:37:19 (4 devices)

Name	Address	IOSName
1122b	1.12.168.4	
1124	12.168.1.2	
168	123.12.1.4	
test-device	192.168.168.203	Cisco01

Device Backups

StartTime	Configuration Snippets
06.07.2015 11:56:00	version 12.2
05.07.2015 9:18:04	no service pad
05.07.2015 9:17:27	service timestamps debug uptime
05.07.2015 9:17:05	service timestamps log datetime
05.07.2015 9:15:05	no service password-encryption
05.07.2015 9:09:44	service sequence-numbers
05.07.2015 9:07:56	hostname Cisco01
05.07.2015 8:58:09	enable secret 5 \$1\$778n\$5j6nunuPycpCvJBGvYjY/
05.07.2015 8:53:22	username admin privilege 15 password 0 password
28.06.2015 12:58:02	username test privilege 15 password 0 heslo
28.06.2015 12:56:37	no aaa new-model
28.06.2015 12:54:47	clock timezone CET 1
28.06.2015 12:38:36	clock summer-time CET recurring last Sun Mar 2:00 last Sun Oct 3:00
22.06.2015 14:23:09	system mtu routing 1500
22.06.2015 13:08:35	vtp mode transparent
22.06.2015 13:00:41	ip subnet-zero
22.06.2015 12:23:19	!
22.06.2015 12:17:38	!
22.06.2015 10:40:34	no file verify auto
22.06.2015 10:27:08	!
22.06.2015 0:32:04	spanning-tree mode rapid-pvst
21.06.2015 23:42:33	spanning-tree loopguard default
21.06.2015 23:34:01	spanning-tree logging
21.06.2015 23:20:04	spanning-tree extend system-id
21.06.2015 23:08:55	spanning-tree uplinkfast
21.06.2015 22:58:41	!
21.06.2015 22:30:43	vlan internal allocation policy ascending
21.06.2015 22:29:24	!
21.06.2015 22:19:16	interface FastEthernet0/1
21.06.2015 22:18:19	!
	interface FastEthernet0/2
	!
	interface FastEthernet0/3
	!
	interface FastEthernet0/4

Device Port Info
05.07.2015 9:17:27

Port	Status	Neighbors	VLAN
Fa0/1	connected		1
Fa0/2	notconnect		1
Fa0/3	notconnect		1
Fa0/4	notconnect		1
Fa0/5	notconnect		1
Fa0/6	notconnect		1
Fa0/7	notconnect		1
Fa0/8	notconnect		1
Gi0/1	notconnect		1

Device Note
02.06.2014 23:14:35 (the last)

- 2013-05-12 - aktivization
- 2013-06-02 - user and enable secret change according firm policy
- 2013-11-11 - power source change
- 2014-05-30 - taken out of production
- 2014-06-02 - moved to Laboratory Domain, joined to test environment

Application log

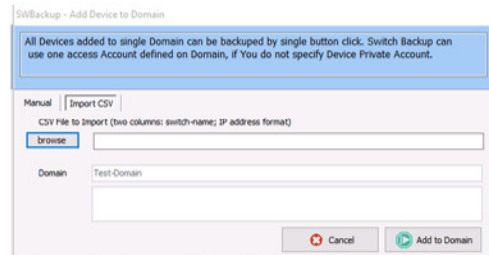
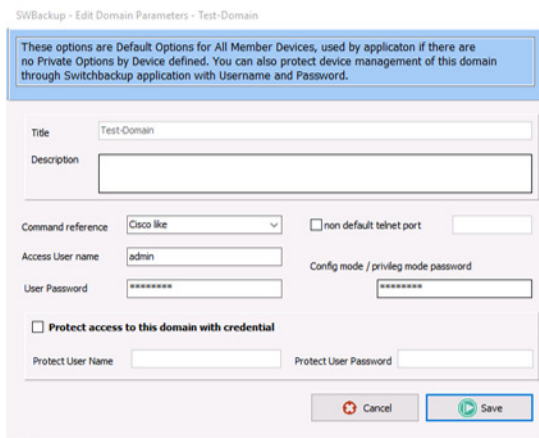
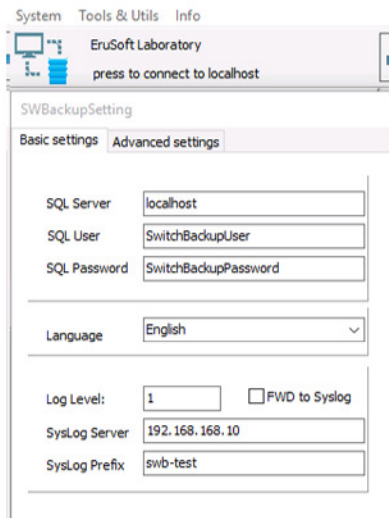
- 19.08.2015 23:22:57 - Database server connected.
- 19.08.2015 23:22:57 - Licence verified 001C2E01234 [EruSoft Laboratory]

0 threads running

Supporting automation, provide complex network device management, network device organization, configuration and port status browsing and auditing, mass configuration, hardware audit.

- * easy and quick (multithread) backup of all managed devices
- * easy point in time restore
- * configuration register supporting difference searching
- * port status register including neighboring facility
- * hardware inventory register, software version list
- * off-line browsing, user-modifiable repository of configuration analyzing tool, supporting security risk audit (user account audits, unciphered passwords..)
- * automated on-line searching of error dissabled ports, end user devices MAC address tracing
- * mass configuration capability, user-modifiable configuration segments repository
- * team notepad and shared repository supports team effectivity, know-how and best practices sharing
- * telnet terminal NAT supported, Hyperterminal incl. X-Modem file transfer, TFTP or FTP server, TAR archiver.

Switchbackup provide easy installation wizard, supports local or network MS SQL server (incl. Express edition). Installed application allows Excel compatible CSV file import/export and provide user-friendly, easy graphical interface and context help to achieve efficiency goals - to get all network devices configuration backup in less then 10 minutes.



1. Basic setting - SQL connection and GUI localization

2. Setting up common properties for group of network devices

3. Import CSV file containing network devices IP address

Quick and simply tree steps to all provided application functionality, to get all configuration backups and network topology snapshot. You get immediate control over network devices configuration, hardware and software inventory, all network devices ports status and utilization, ability to restore devices, clone device configuration, make mass changes and audits.

You get immediate recovery scenario in the event of failure of one of network elements - ability to one click restore to identical hardware.

Register of Neighbors

Port Status Snapshot

One click Configuration restore

Port	Status	VLAN	Duplex	Speed	Description	Type
Po17	notconnect	trunk	auto	auto	rack17	
Po20	connected	trunk	a-full	10G	dh	
Po23	connected	trunk	auto	auto		
Te1/1	connected	trunk	full	full		
Te1/2	connected	trunk	full	full		
Te1/3	notconnect	1	full	auto		
Te1/4	notconnect	1	full	auto		
G2/1	monitoring	trunk	full	full		
G2/2	inactive	1	full	auto		
G2/3	connected	trunk	full	full		
G2/4	inactive	1	full	auto		
G2/5	connected	trunk	full	a-1000	rack5	1000BaseLH
G2/6	inactive	1	full	auto		No Gbic
G2/7	connected	trunk	full	a-1000	rack7	1000BaseLH
G2/8	inactive	1	full	auto		No Gbic
G2/9	notconnect	62	full	auto	3Com WiFi	1000BaseLH
G2/10	inactive	1	full	auto		No Gbic
G2/11	connected	trunk	full	a-1000	rack11	1000BaseLH
G2/12	inactive	1	full	auto		No Gbic
G2/13	connected	trunk	full	a-1000	rack13	1000BaseLH
G2/14	inactive	1	full	auto		No Gbic
G2/15	connected	trunk	full	a-1000	rack15	1000BaseLH
G2/16	inactive	1	full	auto		No Gbic
G2/17	connected	trunk	full	a-1000	rack17	1000BaseLH
G2/18	inactive	1	full	auto		No Gbic
G2/19	connected	trunk	full	a-1000	rack19	1000BaseLH
G2/20	inactive	1	full	auto		No Gbic
G2/21	connected	trunk	full	a-1000	rack21	1000BaseLH
G2/22	inactive	1	full	auto		No Gbic
G2/23	connected	trunk	full	a-1000	rack23	1000BaseLH
G2/24	inactive	1	full	auto		No Gbic
G2/25	connected	trunk	full	a-1000	rack25	1000BaseLH
G2/26	inactive	1	full	auto		No Gbic
G2/27	connected	trunk	full	a-1000	rack27	1000BaseLH

For Example, provides Switchbackup configuration differences searching. You can browse configuration snapshots taken at different times and from different devices:

The screenshot shows the 'Switch Configuration Backup' application interface. At the top, there are navigation tabs: System, Tools & Utils, and Info. Below this, the 'Domain' section shows 'All-Devices' with a list of imported devices including '3Com SuperStack', 'C2960/8p-TV', 'C4506', and various 'Cisco 2960' models. The main area displays 'Device Backup Differences' for '3Com SuperStack', comparing two snapshots from 2014. The differences are listed in a table with columns for line numbers and configuration commands.

Line	Configuration	Line	Configuration
113	port link-type trunk	113	broadcast-suppression pps 3000
114	port trunk permit vlan 1 62 90	114	undo jumboframe enable
115	broadcast-suppression pps 3000	115	apply qos-profile default
116	undo jumboframe enable	116	#
117	apply qos-profile default	117	interface GigabitEthernet1/0/6
118	#	118	stp edged-port enable
119	interface GigabitEthernet1/0/6	119	broadcast-suppression pps 3000
120	stp edged-port enable	120	undo jumboframe enable
121	broadcast-suppression pps 3000	121	apply qos-profile default
122	undo jumboframe enable	122	#
123	apply qos-profile default	123	interface GigabitEthernet1/0/7
124	#	124	stp edged-port enable
125	interface GigabitEthernet1/0/7	125	broadcast-suppression pps 3000
126	stp edged-port enable	126	undo jumboframe enable
127	broadcast-suppression pps 3000	127	apply qos-profile default
128	undo jumboframe enable	128	#
129	apply qos-profile default	129	interface GigabitEthernet1/0/8
130	#	130	stp edged-port enable
131	interface GigabitEthernet1/0/8	131	broadcast-suppression pps 3000
132	stp edged-port enable	132	undo jumboframe enable
133	broadcast-suppression pps 3000	133	apply qos-profile default
134	undo jumboframe enable	134	#
135	apply qos-profile default	135	interface GigabitEthernet1/0/9
136	#	136	broadcast-suppression pps 3000
137	interface GigabitEthernet1/0/9	137	undo jumboframe enable
138	broadcast-suppression pps 3000		
139	undo jumboframe enable		

While the configuration backup saves and status ports, an overview of nearby facilities including channel ports and IP address, and you can also store notes on any configuration.

The 'Device Port Info' window displays a table of port status for a device on 09.07.2015 14:58:32. The table includes columns for Port, Status, VLAN, Duplex, Speed, Description, and Type. Below the table, there is a summary of port utilization statistics.

Port	Status	VLAN	Duplex	Speed	Description	Type
Po17	notconnect	trunk	auto	auto	rack17	
Po20	connected	trunk	a-full	10G	channel20 - do 45	
Po23	notconnect	trunk	auto	auto	rack23	
Te1/1	connected	trunk	full	10G	channel20 - 4500	10GBase-SR
Te1/2	connected	trunk	full	10G	channel20 - 4500	10GBase-SR
Te1/3	notconnect	1	full	auto		No XCVR
Te1/4	notconnect	1	full	auto		No XCVR
Gi2/1	monitoring	trunk	full	a-1000	2IPS	1000BaseLH
Gi2/2	inactive	1	full	auto		No Gbic
Gi2/3	connected	trunk	full	a-1000	rack3	1000BaseLH
Gi2/4	inactive	1	full	auto		No Gbic
Gi2/5	connected	trunk	full	a-1000	rack5	1000BaseLH
Gi2/6	inactive	1	full	auto		No Gbic
Gi2/7	connected	trunk	full	a-1000	rack7	1000BaseLH
Gi2/8	inactive	1	full	auto		No Gbic
Gi2/9	notconnect	62	full	auto	3Com WiFi	1000BaseLH

Querying port utilization..

- 982 x connected (in 101 devices, 9,7ports per device)
- 87 x disabled (in 30 devices, 2,9ports per device)
- 78 x inactive (in 1 devices, 78ports per device)
- 1 x monitoring (in 1 devices, 1ports per device)
- 1658 x notconnect (in 100 devices, 16,6ports per device)

Total: 2806 ports found in domain
Total used 35% of available ports

The 'Device Port Info' window displays a table of port connections for a device on 09.07.2015 14:58:32. The table includes columns for Port, Host Name, Host Po, Host IP, and Nat.V.

Port	Host Name	Host Po	Host IP	Nat.V
Te1/1	Core5510 VSS	T2/5/3	192.168.10.1	1
Te1/2	Core5510 VSS	T1/5/3	192.168.10.1	1
Gi2/1	IPS	G0/8	192.168.10.54	11
Gi2/11	Cisco rack11	G0/1	192.168.10.227	11
Gi2/13	Cisco rack13	G0/10	192.168.10.208	11
Gi2/15	Cisco rack15	G1/0/2/1	192.168.10.201	11
Gi2/17	Cisco rack17	G0/1	192.168.10.251	11
Gi2/19	Cisco rack19	G0/1	192.168.10.221	11
Gi2/21	Cisco rack21	G1/0/2/1	192.168.10.210	11
Gi2/23	Cisco rack23	G1/0/2/1	192.168.10.215	11
Gi2/25	Cisco rack25	G1/0/2/1	192.168.10.225	11
Gi2/27	Cisco rack27	G0/1	192.168.10.104	11
Gi2/29	Cisco rack29	G0/1	192.168.10.211	11
Gi2/3	Cisco rack3	G1/0/2/1	192.168.10.212	11
Gi2/31	Cisco rack31	G0/1	192.168.10.67	11
Gi2/33	Cisco rack33	G1/0/2/1	192.168.10.207	11
Gi2/35	Cisco rack35	G1/0/2/1	192.168.10.204	11
Gi2/37	Cisco rack37	G1/0/2/1	192.168.10.224	11
Gi2/39	Cisco rack39	G1/0/2/1	192.168.10.206	11
Gi2/41	Cisco rack41	G1/0/2/1	192.168.10.217	11
Gi2/43	Cisco rack43	G1/0/2/1	192.168.10.205	11
Gi2/45	Cisco rack45	G1/0/2/1	192.168.10.202	11
Gi2/47	Cisco rack47	G1/0/2/1	192.168.10.216	11

The 'Device Note' window displays a log of configuration changes and application logs for a device on 02.06.2014 23:14:35 (the last before 09.07.2015 14:58:32). The notes include dates and descriptions of changes, and the application log shows database server connections.

2013-05-12 - akvizitation

2013-06-02 - user and enable secret change according firm policy

2013-11-11 - power source change

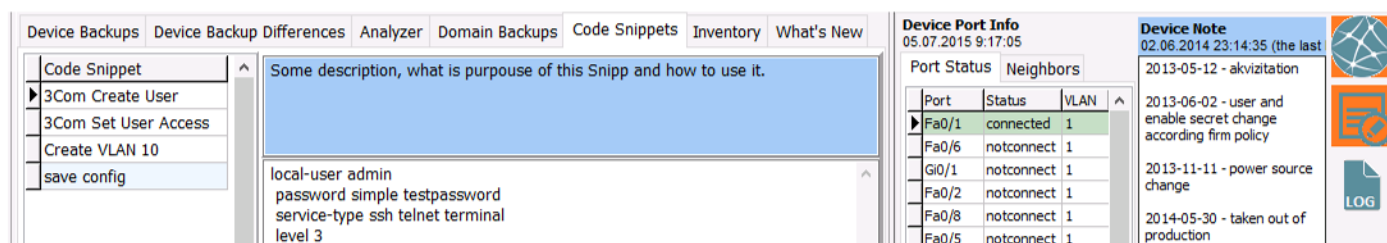
2014-05-30 - taken out of production

2014-06-02 - moved to Laboratory Domain, joined to test environment

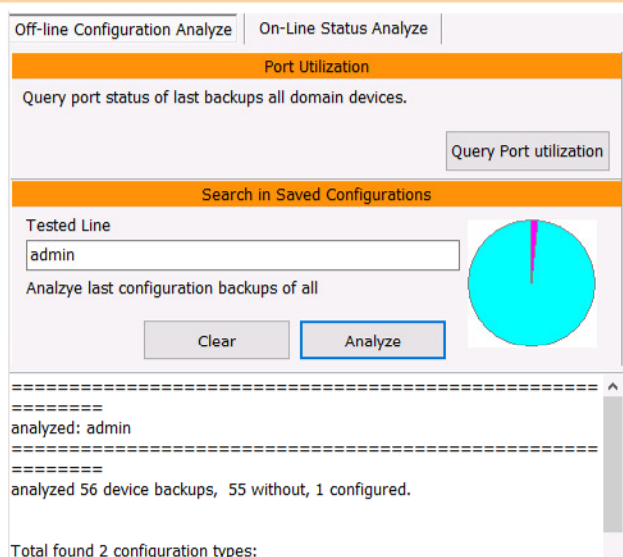
Application log

19.08.2015 23:35:30 - Database server connected.
19.08.2015 23:35:30 - Licence verified 001CZE01234 [EruSoft Laboratory]

Switchbackup offers toolset for performing bulk configuration changes, built-in editor for configuration cloning and changes, repository of configuration segments, clipboard editor, build-in TFTP and FTP server, TAR compress and decompress utility and other tools to help configure network devices more effectively and to avoid misconfiguration.



Switchbackup offers toolset for analyze configuration backups, user accounts, port utilization statistic, online searching of disabled ports, network device tracing, hardware and software inventory of network devices. All that tools are designed to help you to improve security, reliability and protect your switches and routers investments.



The screenshot shows the 'Domain Backups' tool interface with a table of devices:

Start Time	Name	Descr	Pid	Vid	Sn
23.7.2015 15:44:38	Switch1 System	Cisco Systems, Inc. WS-C4510R-E 10 slot switch	WS-C4510R-E	V01	SPE1230
18.6.2015 16:19:14	Switch1 Clock Module	Clock Module	WS-X4K-CLOCK-E	V01	JAE1235
9.4.2015 16:26:42	Switch1 Mux Buffer 1	Mux Buffers for Redundancy Logic	WS-X4590-E	V01	JAE1235
13.1.2015 21:36:49	Switch1 Mux Buffer 2	Mux Buffers for Redundancy Logic	WS-X4590-E	V01	JAE1235
13.1.2015 19:07:59	Switch1 Mux Buffer 3	Mux Buffers for Redundancy Logic	WS-X4590-E	V01	JAE1235
12.12.2014 10:14:37	Switch1 Mux Buffer 4	Mux Buffers for Redundancy Logic	WS-X4590-E	V01	JAE1235
17.9.2014 14:03:22	Switch1 Mux Buffer 7	Mux Buffers for Redundancy Logic	WS-X4590-E	V01	JAE1235
22.8.2014 14:49:24	Switch1 Mux Buffer 8	Mux Buffers for Redundancy Logic	WS-X4590-E	V01	JAE1235
2.7.2014 1:02:06	Switch1 Mux Buffer 9	Mux Buffers for Redundancy Logic	WS-X4590-E	V01	JAE1235
29.6.2014 20:47:11	Switch1 Mux Buffer 10	Mux Buffers for Redundancy Logic	WS-X4590-E	V01	JAE1235
29.6.2014 18:31:30	Switch1 Linecard 1 (virtual s	1000BaseX (SFP) with 24 SFP Ports Jumbo Frame Support	WS-X4624-SFP-E	V01	JAE1243
29.6.2014 18:27:52	GigabitEthernet1/1/1	1000BaseLH	Unspecified		H111896
20.12.2013 10:59:21	GigabitEthernet1/1/2	1000BaseLH	Unspecified		H111897

Discovering disabled interfaces..

```
192.168.10.17 Cisco2960-TetsDevice07
Port Name Status Vlan Duplex Speed Type
Gi0/22 disabled 11 auto auto Not Present
Gi0/23 disabled 11 auto auto Not Present

192.168.10.111 Cisco3750-TetsDevice11
Port Name Status Vlan Duplex Speed Type
Fa0 disabled routed auto auto 10/100BaseTX
```

One everlasting license fee covers one database repository. You can install unlimited instances of Switchbackup for unlimited number of technicians and manage unlimited number of devices and unlimited number of backup sets, include one year application support and upgrade fee.

Thank You for Your interest in our product! If you have anymore questions we would be happy to answer and to help you find a partner in your area.

Go to www.switch-config.com to get more info, or send us a question to mail@switch-config.com

* Application is designed for management of devices produced by Cisco, 3Com and Huawei, using management station equipped with OS Microsoft windows XP, windows 7, 8, 8.1 a 10. More requirement informations are publised on www.switch-config.com and in product documentation.